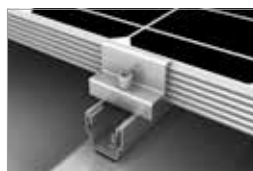
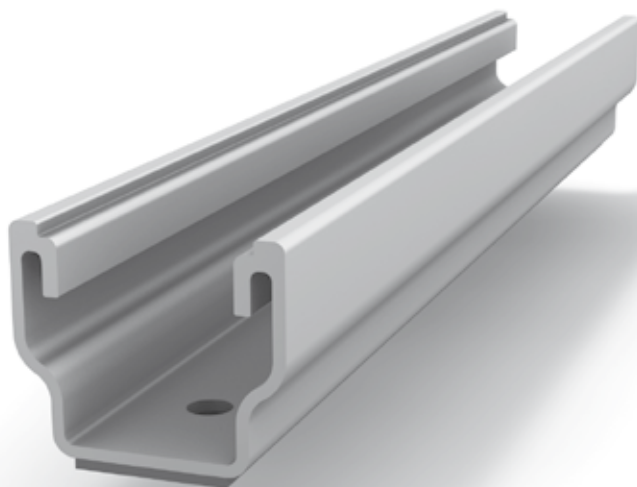


Mounting systems for solar technology



K2 SYSTEMS  
**SLOPED ROOF SYSTEMS**  
**MULTIRAIL SYSTEM**

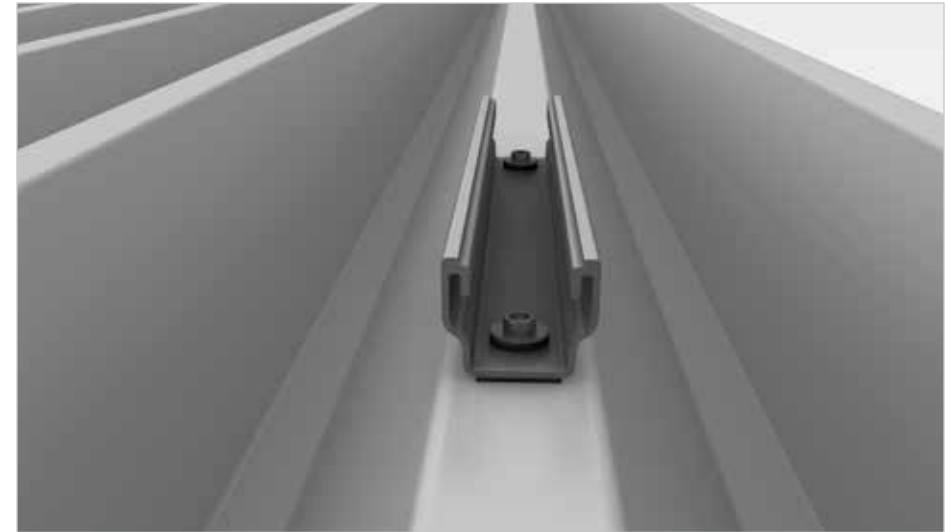
## MULTIRAIL SYSTEM

- The short K2 MultiRail aluminium mounting rail for direct installation on trapezoidal sheet metal or tin roofs
- Direct module attachment
- Can also be used as the basis for cross bracing
- Very easy to install with simple system components
- Modular design suitable for any system size
- Available in a variety of lengths: 100, 250, 400 and 4200 mm
- In lengths 100mm and 250mm with 2x 6mm boreholes and EPDM 3mm pre-assembled'

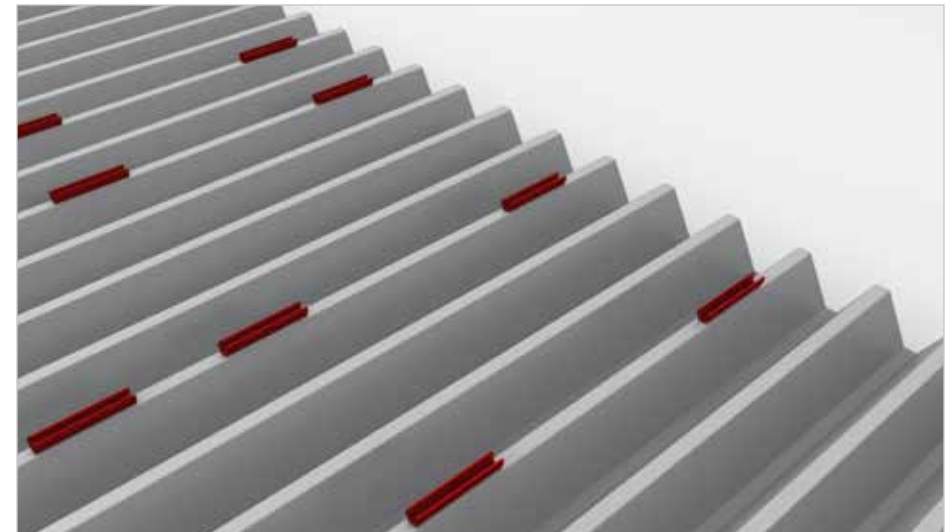


### Technical data

Field of application	Sloped roof
Roofing	Trapezoidal sheet metal or tin roofs
PV modules	suitable for all standard framed module types and First-Solar
Module orientation	Portrait / Landscape (with cross bracing)
Material	Aluminium (EN AW-6063 T66)
Roof connection	Screw connection depending on roof type with drilling screws or self-tapping screws with supervisory approval or timber screws
Static principles	Calculation principles in accordance with Eurocode 9 - dimensioning and construction of aluminium structures
Load assumption in accordance with	DIN EN 1991 (Eurocode 1)



Detail illustration - MultiRail on Trapezoidal sheet



Detail illustration - MultiRail

SERVICE-HOTLINE  
**+49 (0)7152 3560-0**  
[www.k2-systems.com](http://www.k2-systems.com)

Produktblatt MultiRail | GB4 | 1113 | Subject to change  
Product illustrations are exemplary illustrations and may differ from the original.

